



Présentation

www.univ-corse.fr

Symposium RETI

Réseau d'Excellence des Territoires Insulaires

9 -10 juillet 2010, Corte, Corsica

Université de la Réunion (France)



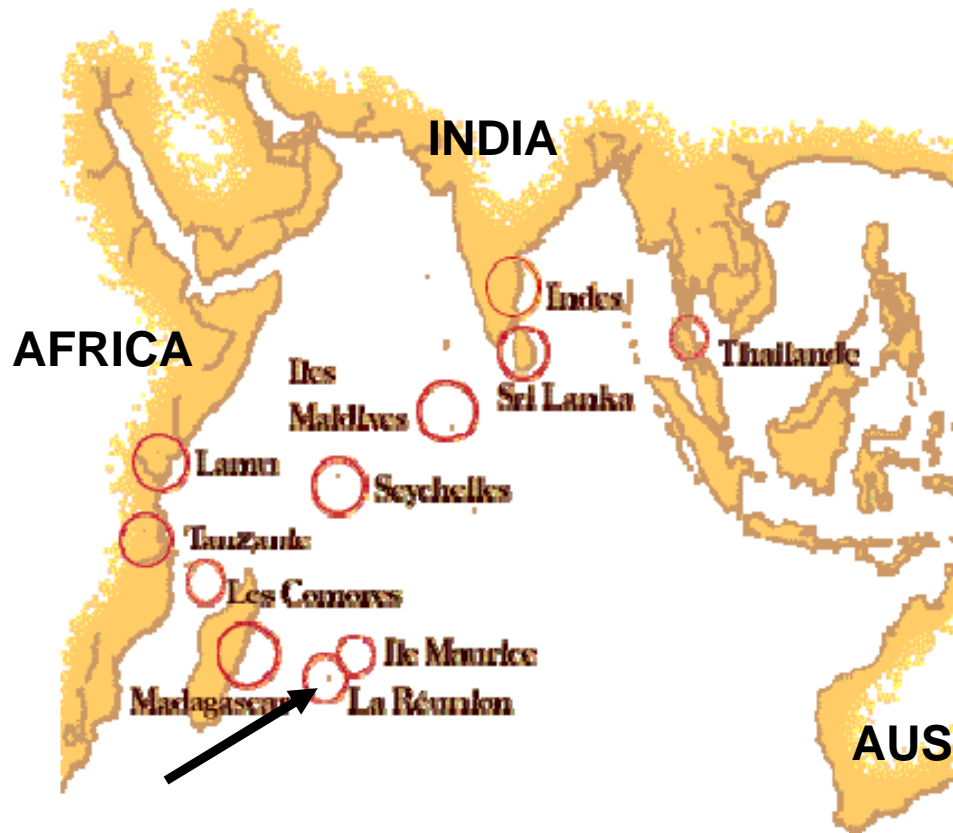


**UNIVERSITÉ DE
LA RÉUNION**

S'ouvrir aux mondes



Réunion Island University, European university in the Indian Ocean



- Réunion Island University is a French university, dedicated to Education and Research.
- Only European university in the Indian Ocean

Key éléments

- ❖ **12 142** students
- ❖ **5 898** granted students (almost 50 %)
 - ❖ **596** foreign students
 - ❖ **57** nationalities
- ❖ **83 Professors**
- ❖ **231 Ass. Professors**
- ❖ **Vague D**
- ❖ **RCE 01/01/2011**

Research & Teaching

Masters

Sciences, Technology, Health

Biodiversity and Tropical Ecosystems
Natural Resources Promotion
Geosphere
Computer Science and Mathematics
Civil Engineering & Urban Planning
Sport, Training, Health & Handicap

Law

Business & commercial right
Property right
Litigation law
Public right : Territories, risk & public action
International relations : Europe-Indian ocean

PhD

Economy & Management

Economy
Management Sciences

Literature, human & social sciences

Indian ocean Societies: Anthropology
Languages, cultures & communication
Literature
South West Indian Ocean (SWIO)
Geography & History
Physical & Educational Sciences



Departments of the university

- 5 Faculties



Law and Economy



Sciences and Technologies



Humanities and Social Sciences



Environmental Sciences



Medicine



•3 Institutes



Management and Business



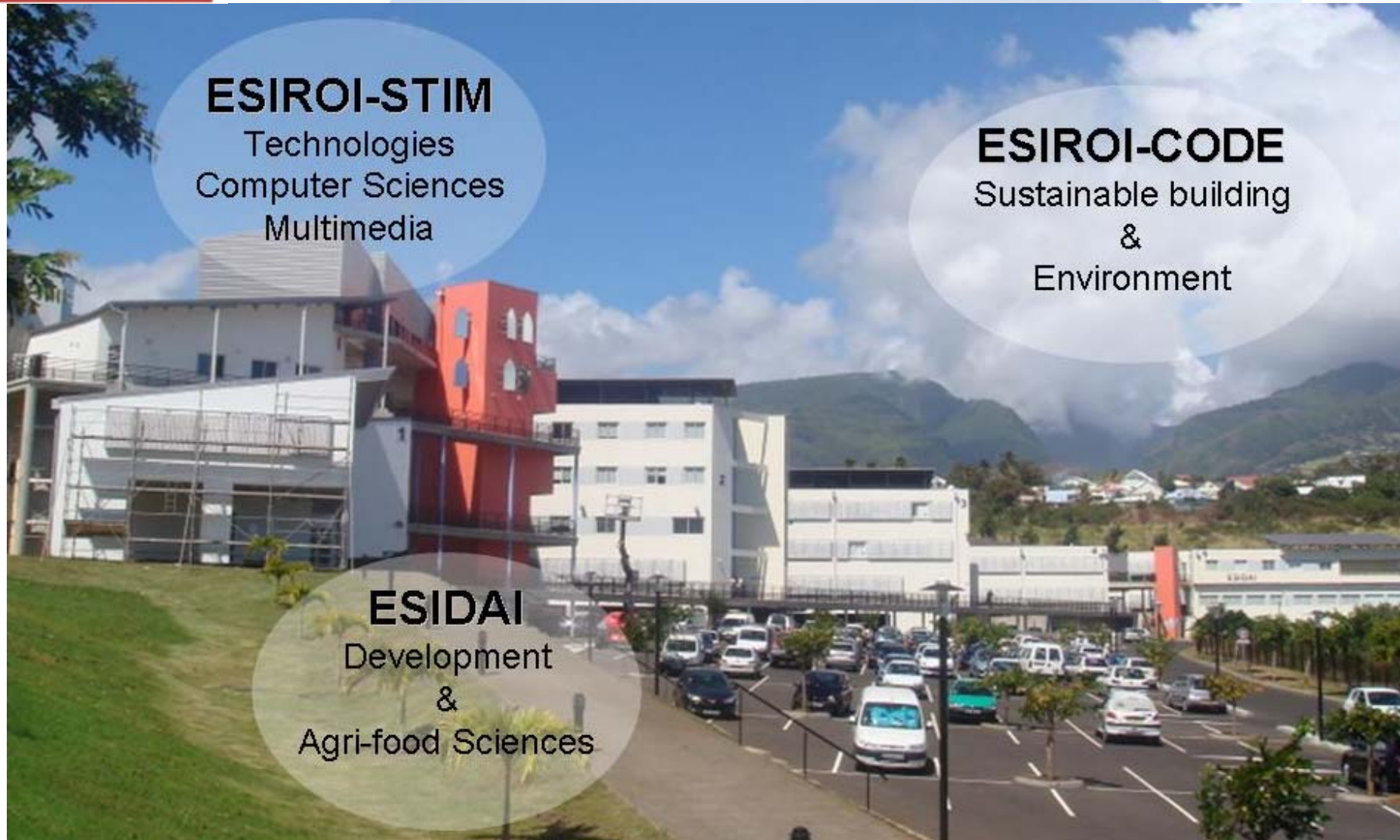
Institute of Technology



Institut of Teaching and Education



- An Engineering school : E.S.I.R.O.I.



ESIROI-STIM

Technologies
Computer Sciences
Multimedia

ESIROI-CODE

Sustainable building
&
Environment

ESIDAI

Development
&
Agri-food Sciences

Research Potential

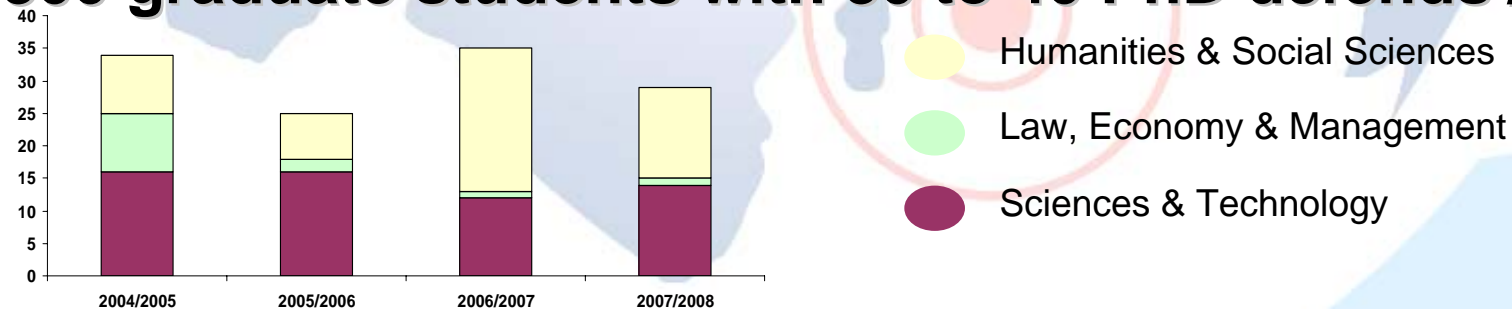
373 scientists and technicians among 16 research units

5 joint units with National Research Institutes, CIRAD (1), CNRS(2), INSERM (1), IRD (1)

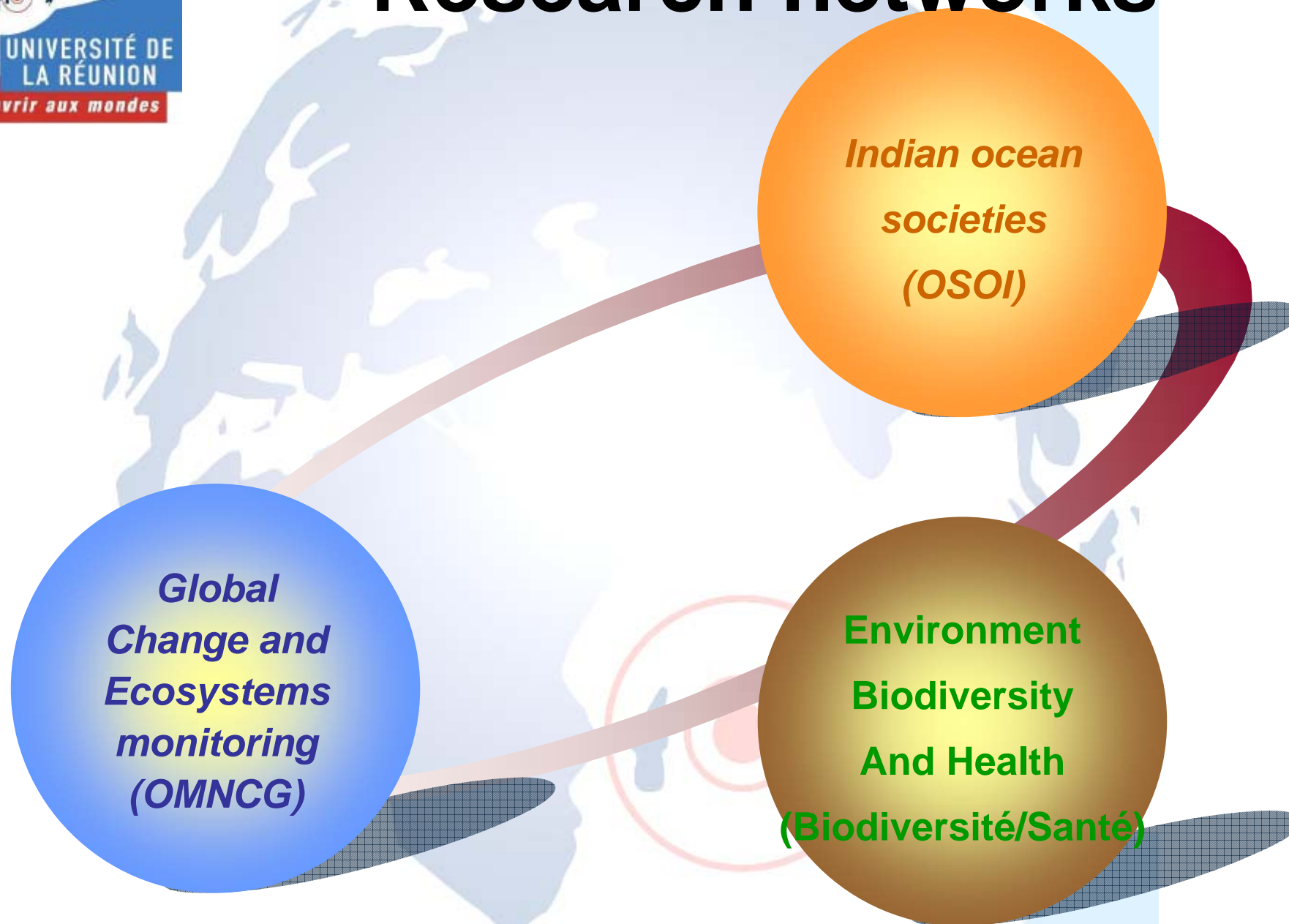
Most research units share **5 Technical platforms**

- Biomedical centre dedicated to radiomolecules production (CY.R.OI)
- Plant Protection Institute for molecular epidemiology (3P, Pole Prot. Plantes)
- Seismic and volcanic observatory (Obs. Volc. Réunion)
- Surveillance and monitoring emerging diseases centre (CRVOI)
- Hurricanes and stratosphere monitoring centre (Centre Mond. Suivi Cycl.)

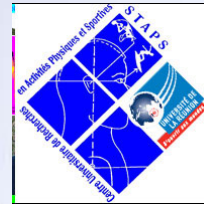
300 graduate students with 30 to 40 PhD defends / year



Research networks



Network of 5 academic laboratories and French research organizations



CEMOI

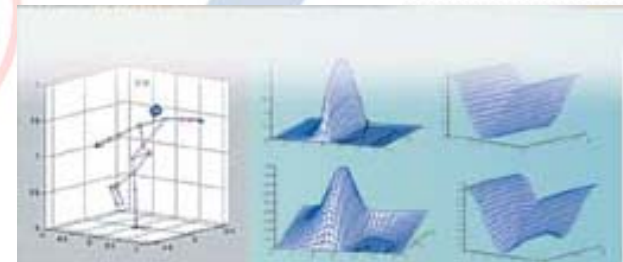
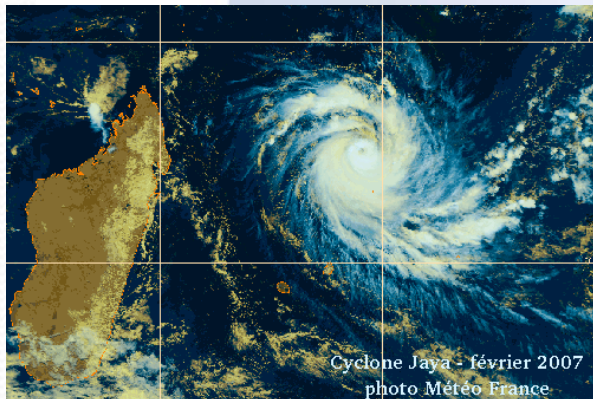
Knowledge and evaluation of Indian ocean societies

- **Risks and development**
Economical Development in small islands
Risks prevention and management
- **Lands and migrations**
Identities, slavery history and diasporas
Patrimony, languages, archives et memories
- **Powers and networks**
Powers/Networks and institutions
Powers/Networks and international relations

✓ Associated laboratories

- UMR CNRS **L**angues, **T**extes et **C**ommunication dans les **E**spaces **C**réolophones et **F**rancophones (**L.C.F.**)
- **C**ontacts de **L**ittératures, de **C**ultures et de **C**ivilisations
 - **O**bservatoire **R**éunionnais des **A**rts, des **C**ivilisations et des **L**ittératures dans leur **E**nvironnement (**O.R.A.C.L.E.**)
 - **C**entre de **R**echerches **L**ittéraires et **H**istoriques de l'**O**céan **I**ndien (**C.R.L.H.O.I.**)
- **O**céan **I**ndien : **E**spaces et **S**ociétés
 - **C**entre de **R**echerches sur les **S**ociétés le l'**O**céan **I**ndien (**C.R.E.S.O.I.**)
 - **C**entre de **R**echerches et d'**E**tudes en **G**éographie de l'**U**niversite de la **R**eunion (**C.R.E.G.U.R.**)
- **C**entre **E**tude et **M**anagement **O**céan **I**ndien (**C.E.M.O.I.**)

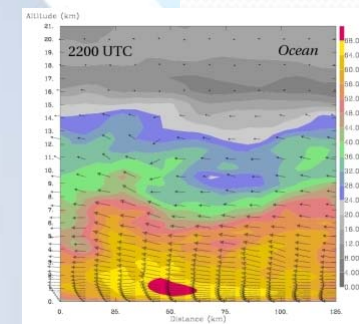
Observatory on Natural Ecosystems and Global Changes



Observatory on Natural Ecosystems and Global Changes

Network of 5 academic laboratories and French research organizations

- **Geosciences Réunion: Geology of volcanic systems**
- **LACy: Research group on Atmosphere and Hurricanes**
- **LIM: Laboratory of Computer Science and Mathematics**
- **Marine Ecology**
- **PVBMT (University & CIRAD) : Plant Communities and Biological Invaders in Tropical Environment**



Research programs

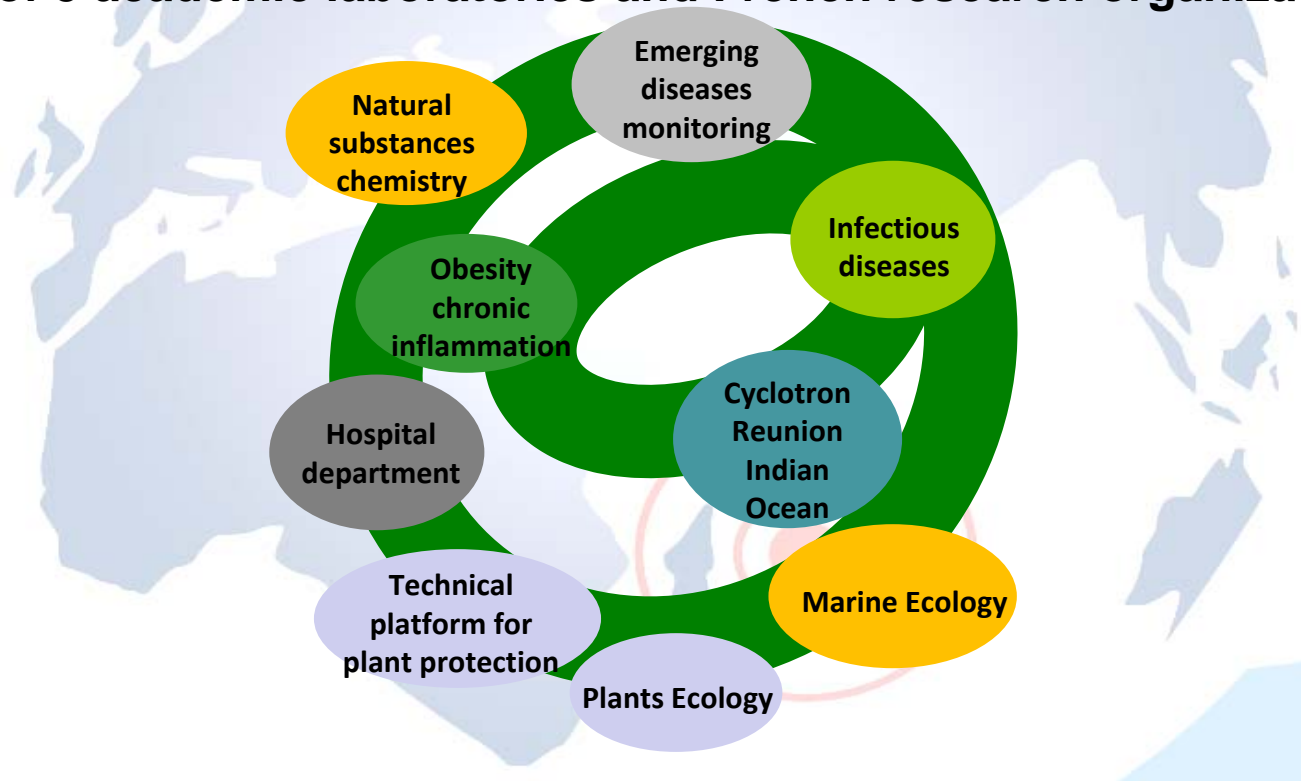
- Global change and impact on natural ecosystems
 - Physical, chemical and biochemical response
 - Biological response
- Natural disturbances
 - Hurricanes
 - Magmatic events
 - Plant recolonisation
- Tools and new technologies
 - Remote sensing
 - LIDAR & Sensor networks



Environment, Biodiversity and Health

*Biodiversity study and promotion in SWIO:
Human, animal and plant health*

Network of 5 academic laboratories and French research organizations





Environment, Biodiversity and Health

Network of 5 academic laboratories
and French research organizations

- Marine Ecology



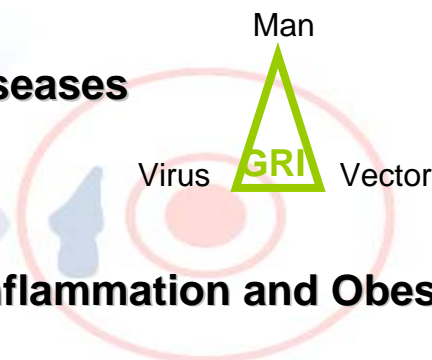
- PVBMT (University & CIRAD) : Plant Communities and Biological Invaders in Tropical Environment



- LCSNSA : Chemistry Laboratory Natural Substances and Food Sciences



- GRI : Research Group on Infectious Diseases



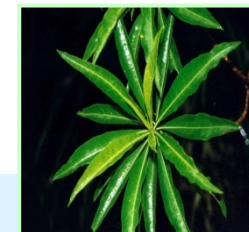
- GEICO : Research Group on Chronic Inflammation and Obesity



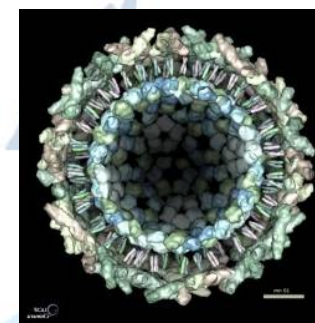
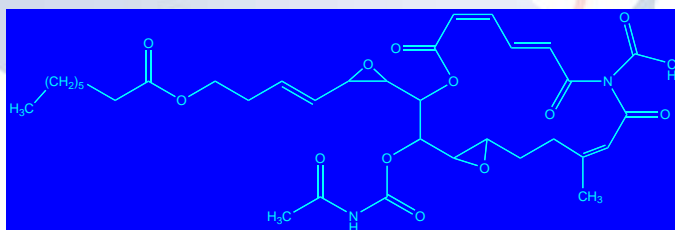


Environment, Biodiversity and Health

Research programs



- **Understanding of evolutionary process of SWIO biodiversity hotspot**
- **Study of forecast, surveillance and alert indicators against regional biodiversity risks**
- **Detection of chemical substances for prevention, diagnostic and therapy**



Environment, Biodiversity and Health

Technical platforms



Plant protection center

- **CYROI** (cyclotron, mass spectrometry, Insectarium, P3 laboratory , RMN, A2 animal room)
- **Plant protection center** (Sequencer, qPCR, breeding rooms, P3 laboratory)
- **Regional hospital center (CHR)** (virology, microbiology and biochemistry laboratories)
- **Regional sea station** (under construction)

➤ **Increasing attractiveness for SWIO, European and international scientists.**



Laboratoire de **P**hysique et **I**ngénierie **M**athématique pour l'**E**nergie et l'**e**nvironneme**NT** (**P.I.M.E.NT**)

Pôle MASC Mathématiques Appliquées et Systèmes

Pôle PhyBAT : Physique du bâtiment

Pôle SEERAB : Systèmes énergétiques et énergies renouvelables appliqués au bâtiment

Pôle GEEB : Génie de l'environnement et espaces bâtis

The image features a central light blue oval with a grid pattern containing the text "University of La Réunion". This oval is superimposed on a faint, light blue map of the African continent. To the left of the central oval are four overlapping ovals, each containing the name of a research institution and its full name. To the right are five overlapping ovals, each containing the name of a region. At the bottom center, there is a red circular graphic with a white dot in the middle and a red ring around it, positioned over the map of the African continent.

CNRS

National Center
for Scientific
Research

CIRAD

International
Research Centre
for Agricultural
Development

IRD

Research
Institute for the
Development

IFREMER

French Research
Institute for
Exploitation of
the Sea

Madagascar

**South
Africa**

India

Mauritius

Seychelles

Comoros

**University of
La Réunion**